

SWIVEL JOINT ARM



COMPOSITION

Carbon steel parts, powder coated.
Contain no toxic parts.
Contain no inflammable parts.
Contain no electrical parts.

USE AND HANDLING

Coating will be damaged by open fire or intensive heat.

MAINTENANCE AND SAFETY

- a. The assembly plate is provided with holes Ø12 mm for mounting to a solid wall of column which can withstand larger forces.
- b. It is absolutely important that bolts periodically must be checked at free assembly.
- c. Turning axis's must be greased for optimal function. Interval depends of intension of use.
- d. Weld seams must be visual periodic inspected on cracks.
- e. Arm may not be overload the maximum indicated weight.
- f. Arm is only suitable for use of strip, curtain or blanket separation. It is not recommended for hoisting operations.

COMBINATION SWIVEL ARM AND COLUMNS / POLES

Orders for swivel arms (for strips or curtains) which will be fixed onto one of the CEPRO columns or poles, will only be delivered in the combinations as mentioned below

Swivel arm maximum length	Curtains max. height 250cm	Curtains max. height 500cm	Strips max. height 250cm	Strips max. height 500cm
2 meter	column 83.10.02.0300	column 83.10.02.0300	column 83.10.02.0300	column 83.20.01.0300
3 meter	column 83.10.02.0300	column 83.10.02.0300	column 83.20.01.0300	column 83.20.01.0300
4 meter	column 83.10.02.0300	column 83.20.01.0300	column 83.25.01.0400	column 83.25.01.0400
5 meter	column 83.20.01.0300	column 83.20.01.0300	column 83.25.01.0400	column 83.25.02.0400
6 meter	column 83.20.01.0300	column 83.20.01.0300	column 83.25.02.0400	column 83.25.02.0400

CEPRO_PFS_Swivel_arms_swivel_arms_joint_arm_2EN Version 001 - Check our website for the latest version.

SWIVEL JOINT ARM



TECHNICAL SPECIFICATION

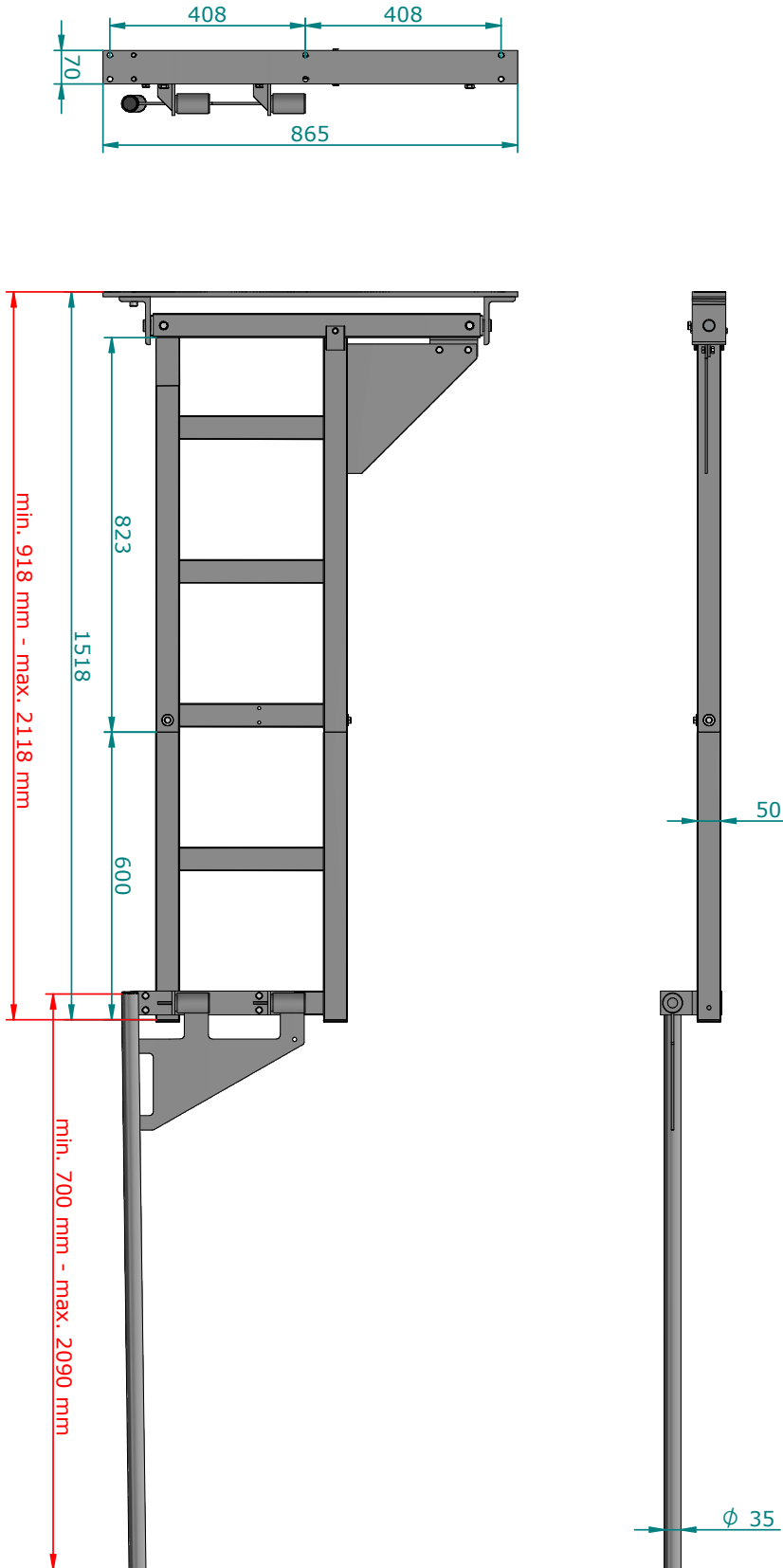
Model Swivel joint arm - 82.10.17.02 + 82.10.17.03 + 82.10.15

Type of swivel arm	: jointed swivel arm
Total weight	: 85kg.
Maximum static load	: 1) 400 N 2) 190 N
Maximum dynamic peak load	: 1) 550 N 2) 240 N
Total length	: min. 161,8 cms, max. 420,8 cms.
Range	: 180°
Overall size height	: 86,5 cms
Functional length	: min. 152,3 cms, max. 411,3 cms.
Operation	: manually
Coating	: powder coated in grey RAL7035
Materials	: steel pipe and strip profiles
Application	: for indoor use

SWIVEL JOINT ARM



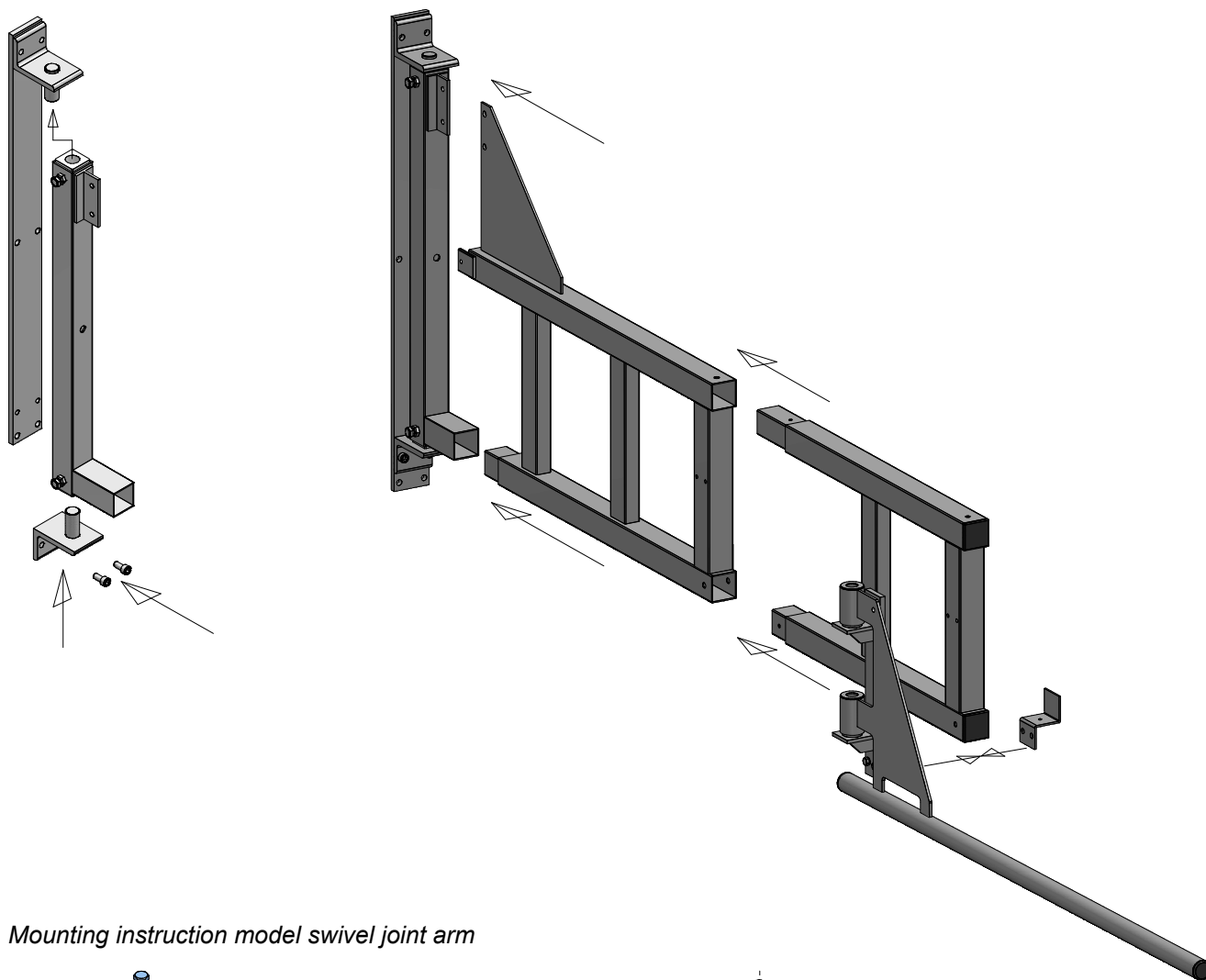
DIMENSIONS



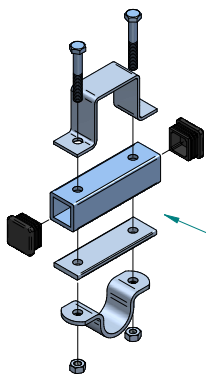
SWIVEL JOINT ARM



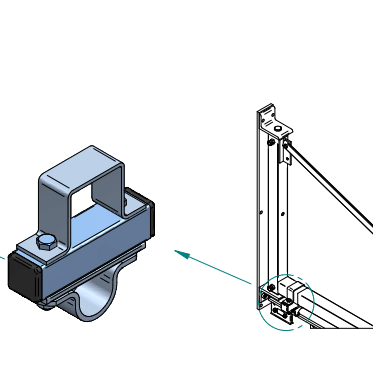
MOUNTING



Mounting instruction model swivel joint arm



Set for fixing tube under swivel arm 80.15.02



Set for fixing rail under swivel arm 80.15.03

CEPRO_PFS_Swivel_arms_swivel_arms_joint_arm_2EN Version 001 - Check our website for the latest version.