

SONIC CLASSIC WALL SYSTEM

Description

The unique, compact construction of the CEPRO SONIC wall system with built-in soundproof elements not only produces sound attenuation but also effective noise reduction in the rest of the working environment. The modular system can be easily and quickly assembled (and is therefore cost-reducing), moved, expanded or changed into another configuration. The CEPRO SONIC wall system exceeds the quality and effectiveness of all other branded systems of its competitors.

Application

The extensive range of Sonic products from CEPRO can reduce noise pollution substantially and enables companies to comply with the applicable noise level standards. The soundproof products ensure increased production and a better performance of employees in noisy environments.

CEPRO SONIC soundproof products were installed at industrial manufacturing companies and in government agencies and educational establishments. Often new and/or customer specific solutions were developed to meet requirements. Especially in confined places with many people (training rooms), CEPRO proves its strength. The extensive experience of the company with all kinds of projects across Europe guarantees an effective solution for each specific noise problem.

Characteristics

Modular system, available with standard dimensions 1012X2012mm and 512X2012mm and a thickness of 50mm. Other dimensions on request. By the use of an open construction of perforated plates, filled with high qualified isolation products and a core of steel, this product has reached its high quality. Total sound reduction is 26 dB.

To be used as a standalone booth, or linked for making complete welding booths. Sonic classic wall elements can be used in combination with many other Cepro products.

This wall system contains welded steel parts, powder coated in green RAL6011, gloss +/- 30%.

Conditions for use

- CEPRO Sonic Classic products are meant for use indoors
- The nuts and bolts used to connect the frame should be checked regularly



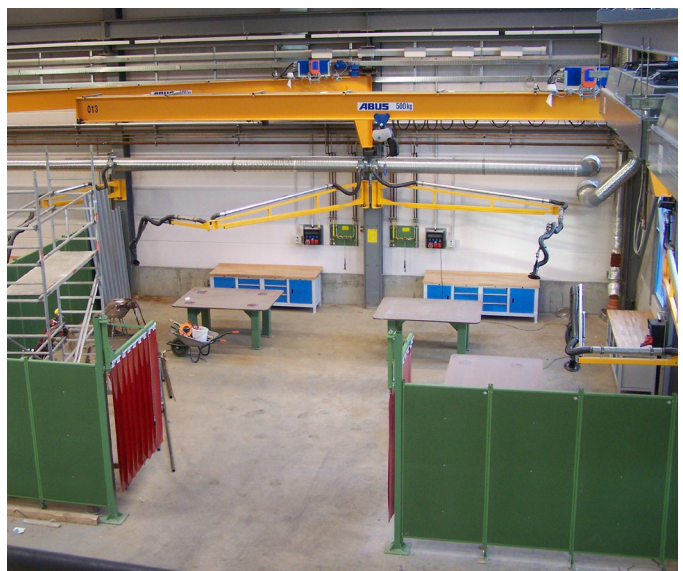
SONIC CLASSIC WALL SYSTEM



General information

Welding and grinding operations are one of the most important noise sources in industrial working environments. Prolonged exposure to high noise concentrations can damage ear drums and cause noise-related deafness. Besides personal suffering, this often means long term absences through illness or high costs as a result of permanent disability. In less serious cases, too much noise is often the cause of loss of concentration and consequently loss of quality and lower production volumes.

Too much noise also seriously disturbs communication on the shop floor which leads to mistakes. Studies have shown that noise pollution in training rooms leads to gaps in knowledge and even to educational errors.



Version 001 - Check our website for the latest version.

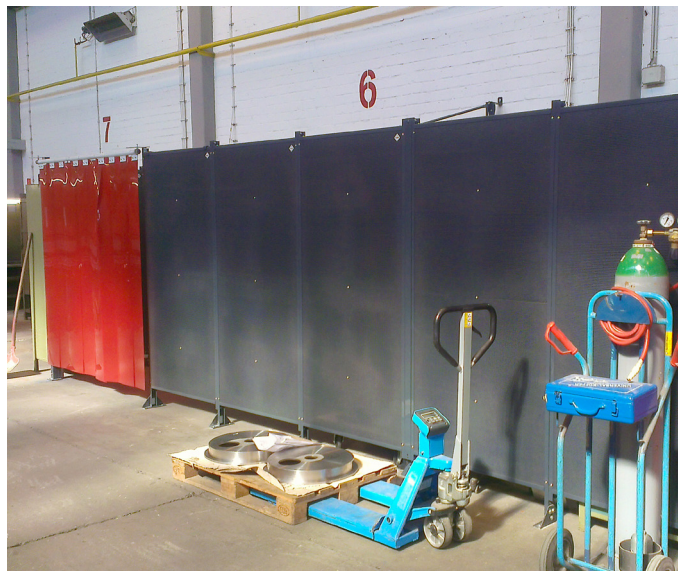
CEPRO_PFS_Sonic_Classic_cabins_1EN_rev

SONIC CLASSIC WALL SYSTEM



Made to size

CEPRO can also offer you tailor made and constructed installations. This goes for dimensions, design and colour scheme. You can count on receiving professional advice from one of our advisors. Please contact our sales department to make an appointment.



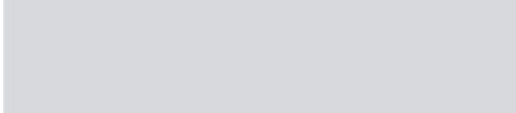
Version 001 - Check our website for the latest version.

CEPRO_PFS_Sonic_Classic_cabins_1EN_rev

SONIC CLASSIC WALL SYSTEM

Standard available RAL colours (surcharge applicable). Other RAL colours are available on request only.

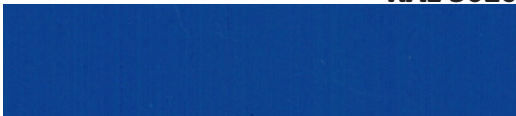
RAL 7035



RAL 3020



RAL 5010



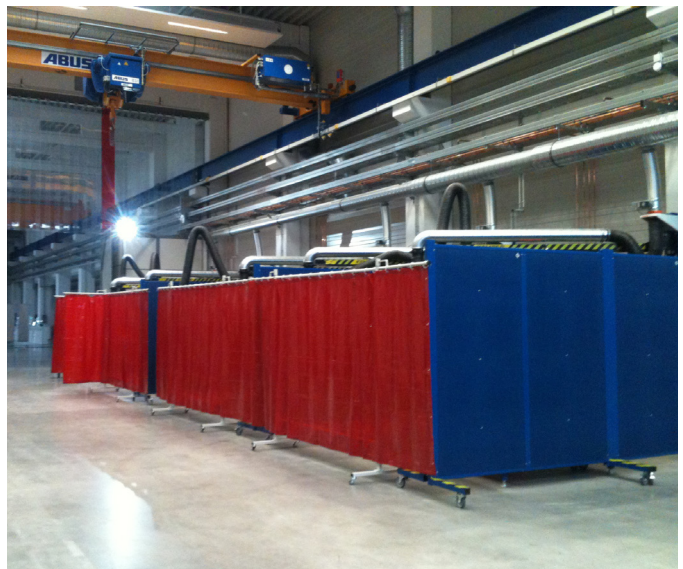
RAL 6011



RAL 5015



The RAL colors in this chart have been matched as closely as possible. This chart can not serve as a standard for RAL color products. The color depends on your monitor and printer. Use official RAL color product for most accurate color.



Version 001 - Check our website for the latest version.

CEPRO_PFS_Sonic_Classic_cabins_1EN_rev

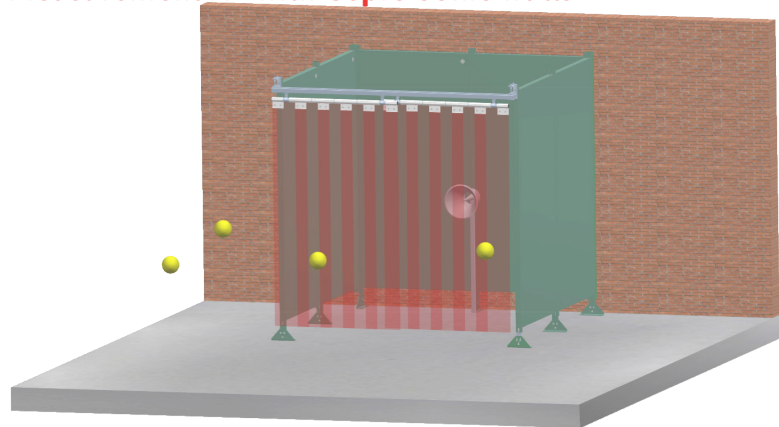
SONIC CLASSIC WALL SYSTEM

Soundreduction Cepro Sonic wall system

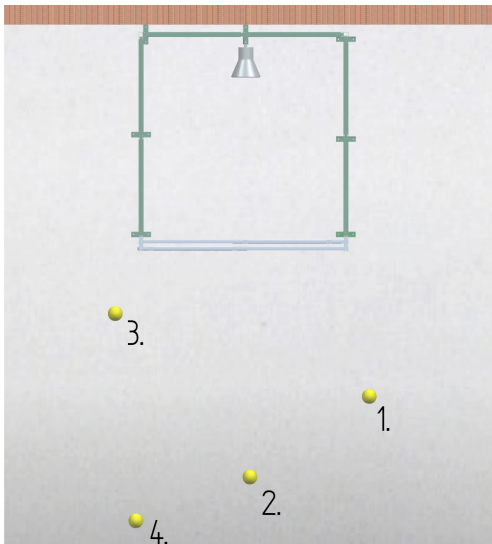
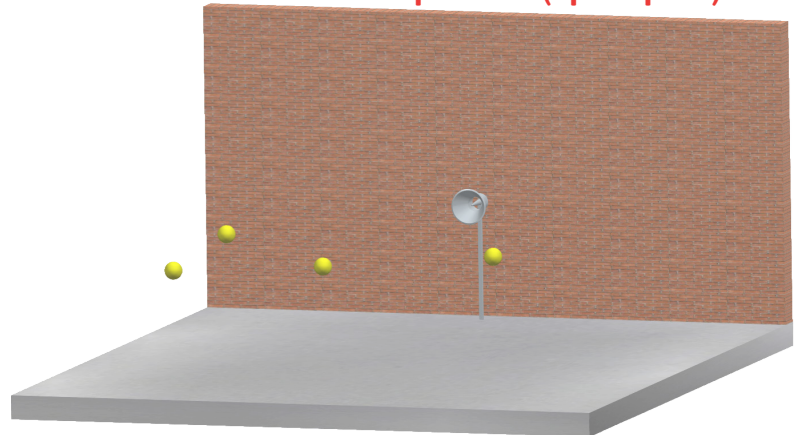
Situation



- Sound level meter : Rion NA-29E
- Sound generator : Meyvis RG-1
- Sound source : Meyvis M5
- Setting : Workplace 1150 m³
- Placing walls : Booth 200 cm wide and 200 cm deep
 2 side walls 220 cm high and 200 cm wide
 1 back wall 220 cm high and 200 cm wide
 front side 200 cm wide Cepro 300x2 mm welding strips

Measurement A - with Cepro Sonic walls



Measurement B - without separation (open space)



-  measuring point
-  sound source

Results

	Hz	125	250	500	1000	2000	4000	6000
Sound pressure A	dB	81,0	86,6	89,9	87,8	83,7	77,3	73,6
Sounc pressure B	dB	83,8	88,8	94,3	97,2	97,7	95,7	93,7
Isolation difference	dB	-2,8	-2,2	-4,5	-9,4	-15,0	-18,4	-20,1

In the construction of several booths in a space isolation differences will be higher. (The “residual noise” from one booth will again be muted in the other cabin).

REFERENCE LIST CEPRO SONIC

 **Netherlands**

DAF	Eindhoven
Philips	Eindhoven
VDL Group	several locations
Stork Wärtzila Diesel	Zwolle
Stork	Raamsdonkveer
Ansaldo Thomassen	Rheden
Friesland Frico Domo	Leeuwarden
Mitsubishi	Almere
Royal Huisman Shipyards	Vollenhoven
Witte van Moort	Vriezenveen
Cascade	Almelo, Almere
GTI	Rotterdam
Helden Couplings	Panningen
Terberg	Benschop
Technische scholen (MTS en HTS)	several locations
Min. Defensie, Landmacht lasopleidingen	Utrecht
Kon. Marine, onderhoudswerkplaats	Den Helder
Penitentiaire inrichtingen	Almere, Alphen a.d Rijn, Nijmegen, Zoetermeer, Zutphen

 **Belgium**

DAF	Westerlo
Degussa	Antwerp
Snecma	Brussels
Volvo Cars	Gent
VCL	Brussels
FRMB	Brussels
Technifuture	Seraign
VDL Group	several locations
VDAB Opleidingen	Antwerpen, Brugge, Haasrode, Hasselt, Peer, Roeselare, St. Niklaas, Vilvoorde
Instituut Kunsten & Ambachten	Brussels
De Naayer Instituut	Mechelen

REFERENCE LIST CEPRO SONIC

Germany

Audi	Ingolstadt
Volkswagen AG	several locations
Siemens AG	several locations
Daimler Chrysler	Düsseldorf, Ludwigsfelde
Deutsche Bahn, Netz AG	several locations
Adam Opel AG	several locations
Ford Werke AG	several locations
MAN Nutzfahrzeuge AG	several locations
BASF	Ludwigshafen
EADS Airbus	Nordenham
Thyssen Krupp Steel Europe AG	Duisburg
Volvo Construction Equipment	Konz
Kaml	Allershausen
GEA Ecoflex GmbH	Sarstedt
Terex Cranes	Zweibrücken
Aus- und Fortbildungszentrum	Rostock
Ucon Container	Haiger
SLV Nord	Hamburg
SLV Siegen	Siegen
Wolffkran	Luckau
Sietas Schiffswerft	Hamburg
Elring Klinger AG	Thale
Viessmann Werk Schwandorf	Schwandorf
Voith Turbo Scharfenberg	Salzgitter
Liebherr	several locations
Lemken	Alpen

France

Peugeot-Citroen Automobiles	Sochaux
SNCF	Hellemmes
Alstom	several locations
AFPA	Marseille
ACCR	Richwiller
Stracel	Strasbourg
Lycée Professionel	St. Louis

Switzerland

CERN	Geneve
SBB Bundesbahn	several locations
Cepta Ecole de Mécanique	Petit-Lancy
Laesser AG	Diepoldsau
Kernkraftwerk Gösgen-Däniken AG	Däniken

REFERENCE LIST CEPRO SONIC

Austria

Voestalpine	several locations
Berufsschule Schärding	Schärding
OMV Raffinerie	Schwechat
Doppelmayr Werk Hohe Brücke	Wolfurt
Wien Energie Gasnetz GmbH	Wien
BFI Burgenland	Großpetersdorf
SZA	Wien

Italy

Fiat	Turin
Auto Transporti Milano	Milaan
Nuovo Pignone (G.E.)	Massa
Scattolini	Veneto

Spain

PSA / Citroën	Vigo
Alstom	Barcelona
Bühler	Pinto-Madrid
CAF	Zaragoza
Ford	Valencia

Portugal

ISQ Instituto de Soldadura	Oeiras
-----------------------------------	--------

UK

Landrover / Jaguar	Solihull
Vauxhall Motors	Ellesmere
Ford Motors	Warwickshire

Poland

Bombardier	Wrocław
VW	Poznan
Rolls Royce Shipping	Gniew

Slovakia

Volkswagen	Trnava
PSA	Hlohovec

REFERENCE LIST CEPRO SONIC

 **Czech Rep.**

Skoda Pilzen

 **Malta**

Motherwell Bridge welding school Hal Far

 **Turkey**

MAN Akyurt - Ankara

 **Azerbaijan**

Welding school Baku

 **Russia**

Gazprom several locations

Middle-East

Meelsa Saudi-Arabia
Ansaldo - Thomassen Saudi-Arabia
MAN UAE - Dubai

 **Indonesia**

Welding School Jakarta Jakarta

 **India**

Andritz Chennai

SONIC CLASSIC WALL SYSTEM

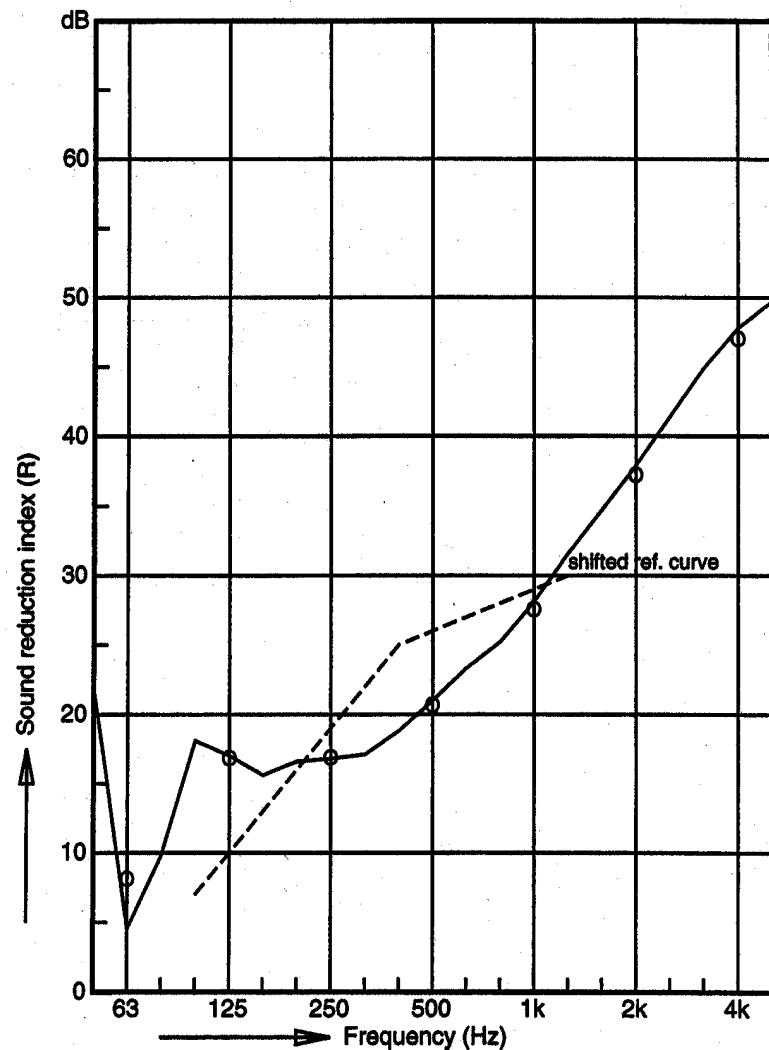
Test TNO Cepro Sonic Classic in accordance with EN-ISO 140-3

Project number : 008.02382/01.01
 Test date : 16 November 2000

Product : Cepro Sonic Classic wall element
 Test room : TNO TPD 3-4, Delt (The Netherlands)

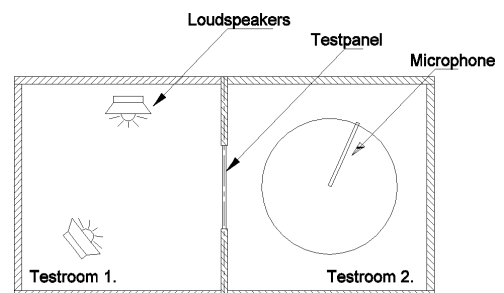
Test result : $R_w = 26$ dB

Frequency (Hz)	R 1/3 oct (dB)	R 1/3 oct (dB)
50	21,90	
63	4,50	8,10
80	9,80	
100	18,10	
125	17,00	16,80
160	15,60	
200	16,60	
250	16,80	16,80
315	17,10	
400	18,80	
500	21,00	20,70
630	23,30	
800	25,20	
1000	28,10	27,60
1250	31,60	
1600	34,70	
2000	37,90	37,20
2500	41,40	
3150	44,90	
4000	47,80	47,00
5000	49,70	



Measurement method

The test room is divided by a concrete wall of approx. 40 cm thick. In this wall there is a test opening (dimensions 123 x 148 cm). In the source room 'white noise' is produced using an amplifier-loudspeaker combination. The sound pressure level in source- and receiving room has been measured with a rotating microphone (rotation time 64s) and analysed over the same time period with a digital time parallel analyser. During the test a sound is produced (during 65s) in a range between 50 and 50.000 Hz. This test was carried out in accordance with EN-ISO 140-3 1996.



SONIC CLASSIC WALL SYSTEM

COMPOSITION

For steel basic system parts:

- Carbon steel profiles, powder coated.
- Carbon steel perforated plate powder coated.
- Filling of two solid mineral fiber panels (2 x 25mm) with a steel plate inbetween.
- Contain no toxic parts.
- Contain no inflammable parts.
- Contain no electrical parts.

USE AND HANDLING

Coating will be damaged by open fire or intensive heat. Oil or grease pollution do not have negative effects on the screens condition.

Dents can occur impact with heavy objects impact against the perforated plate.

MAINTENANCE AND SAFETY

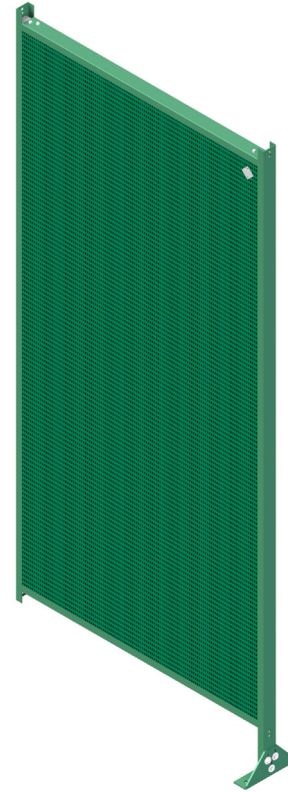
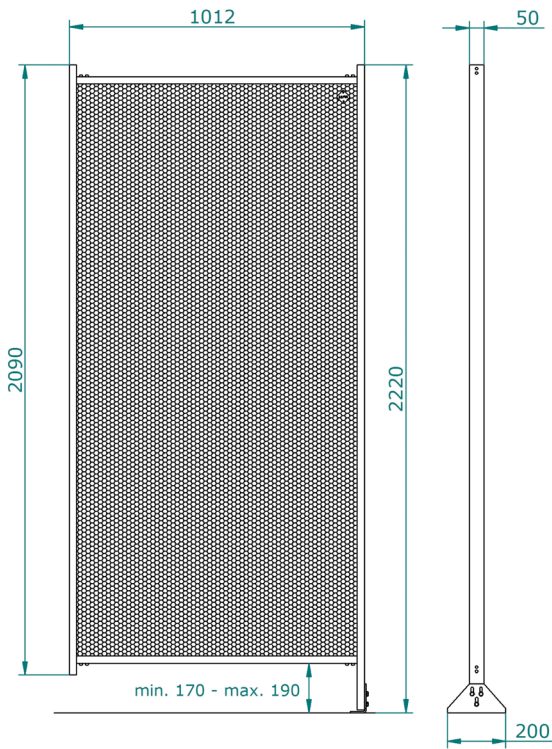
Bolts must be periodic checked. When assemble, take care of a flat and stable surface. The structure is stabilized by attachment to a wall or by the use of corner arrangements.

TECHNICAL SPECIFICATION

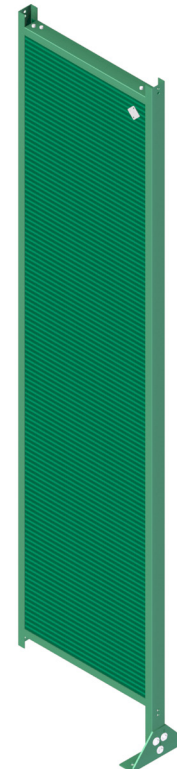
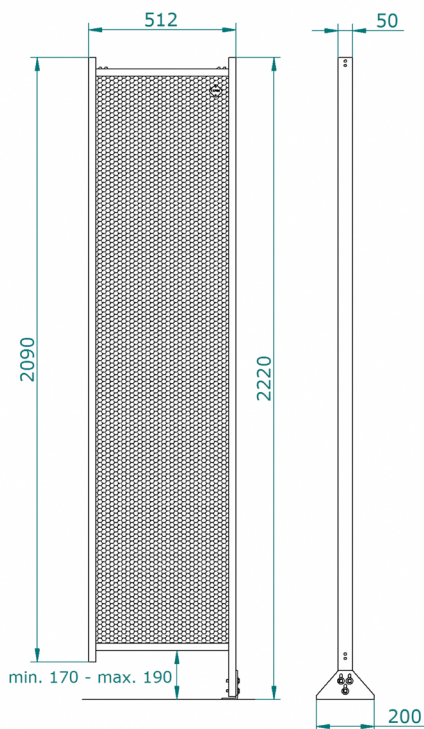
Type screen	: Solid noise reducing screen.
Total weight	: basic screen (0.5 x 2m) : 25kg.
Total weight	: basic screen (1 x 2m) : 41 kg.
Overall size height	: 2090 mm.
Overall size height	: including feet: 2210 mm.
Width	: 512 or 1012mm.
Materials	: Steel profiles and perforated plate, power coated in green, RAL6011.
Inlay	: 2 x 25mm rock wool 75kg/m ³ with a steel coreplate 0.5mm.
Sound reduction	: Rw = 26 dB (Tested by TNO)
Perforated plate	: 0.75mm, meshes 5mm, center to center 7.5mm.
Operation	: Manufactured in factory, easy to assemble and re-assemble on site.

SONIC CLASSIC WALL SYSTEM

DIMENSIONS BASIC WALL PARTS



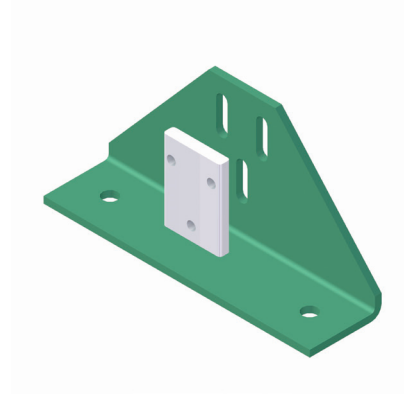
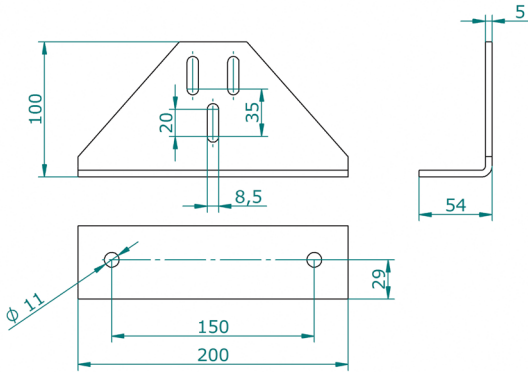
45.00.00.2010 Sonic wall element 1.012 mm wide



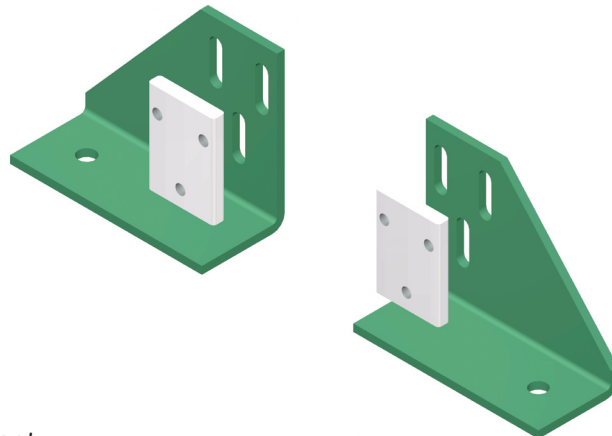
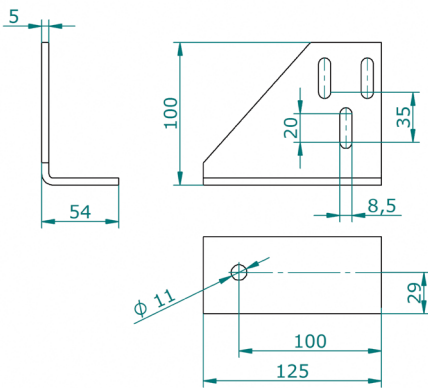
45.00.00.2005 Sonic wall element 512 mm wide

SONIC CLASSIC WALL SYSTEM

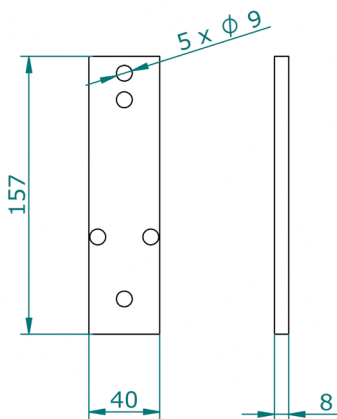
DIMENSIONS BASIC WALL PARTS



45.10.00 Sonic Classic adjustable foot



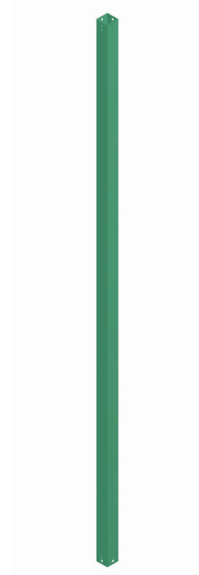
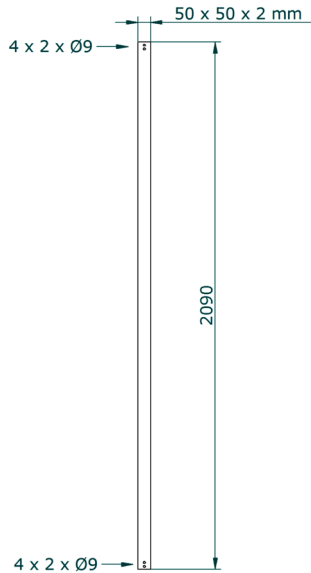
45.10.02 / 45.10.03 Sonic Classic adjustable half foot



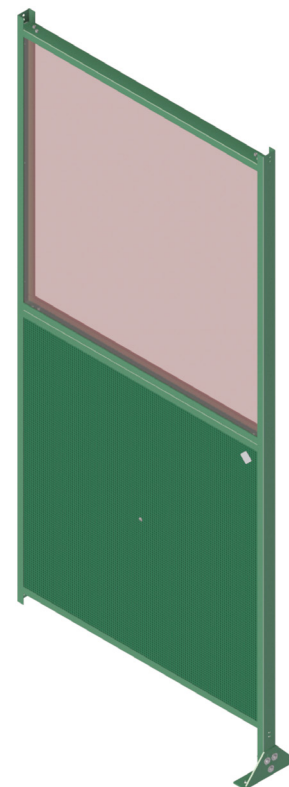
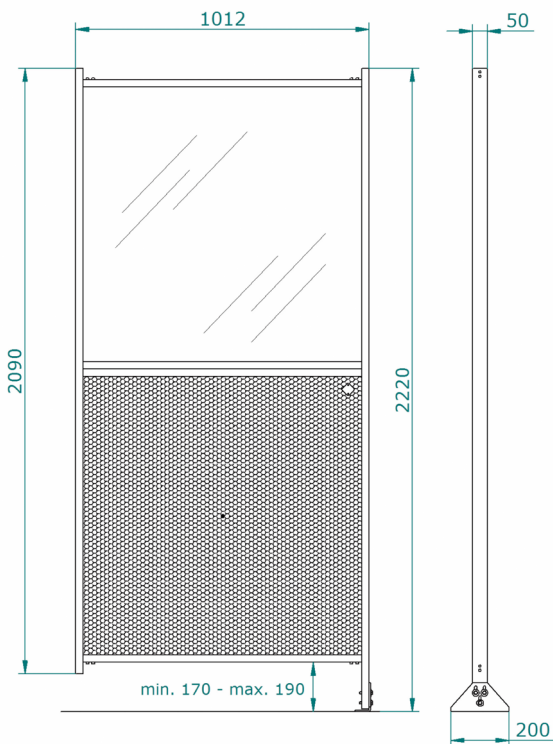
45.35.20 Sonic Classic extension adjustable foot

SONIC CLASSIC WALL SYSTEM

DIMENSIONS BASIC WALL PARTS



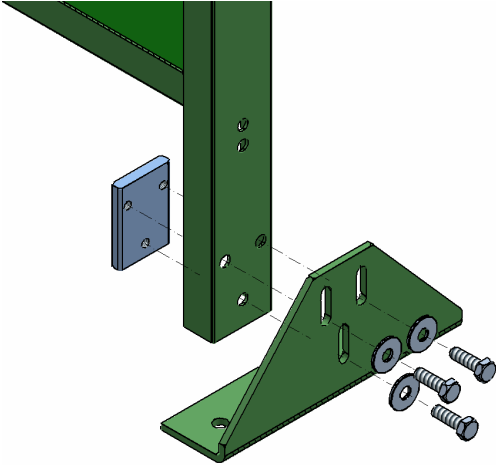
45.20.01 Sonic Classic joining pole



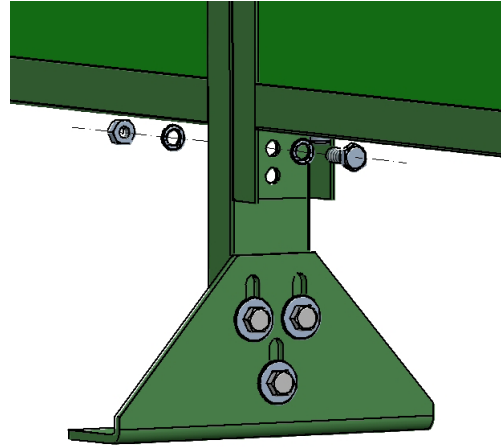
45.00.03.2010 Sonic wall element 1012 mm wide with Impact window

SONIC CLASSIC WALL SYSTEM

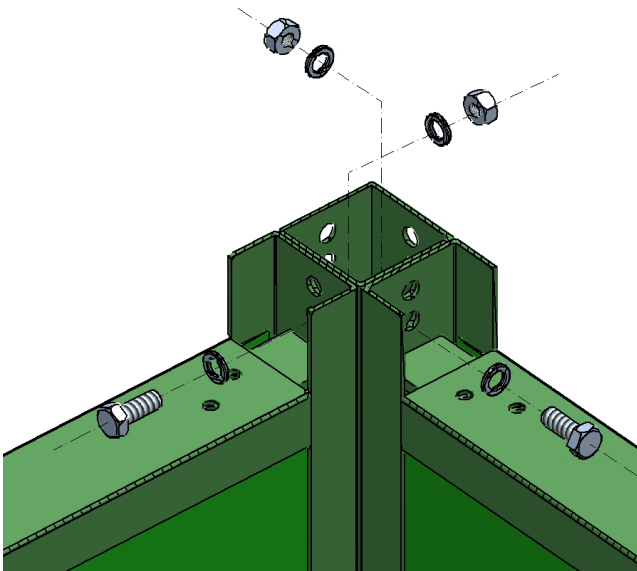
MOUNTING BASIC WALL PARTS



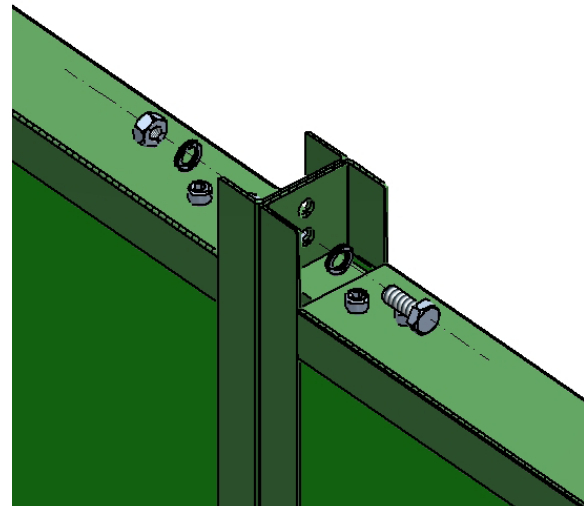
Mounting adjustable foot to Sonic Classic wall element



Mounting adjustable foot to several Sonic Classic wall elements in a row

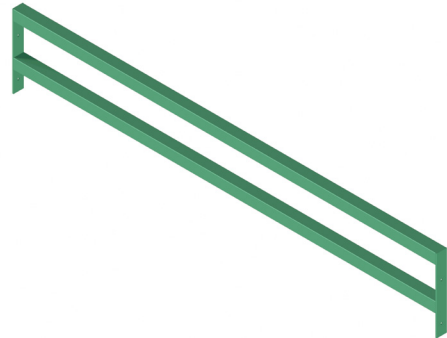
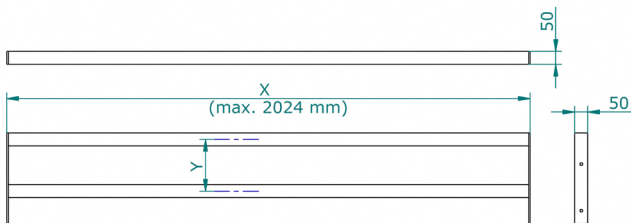


Mounting joining pole to Sonic Classic wall element to make an angle of 90° or a cross bond

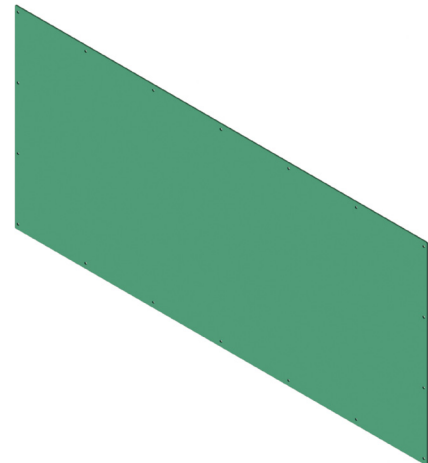
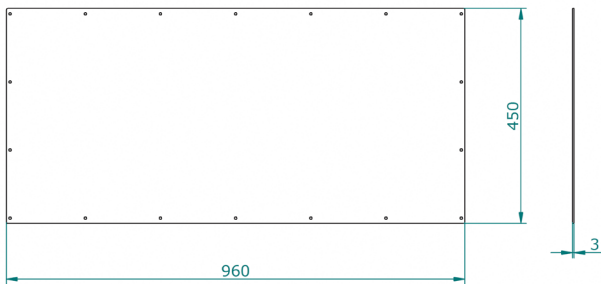


SONIC CLASSIC WALL SYSTEM

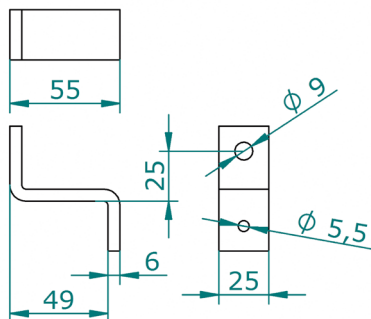
DIMENSIONS ACCESSOIRES



45.30.15.2022 Sonic Classic console for fume extractor



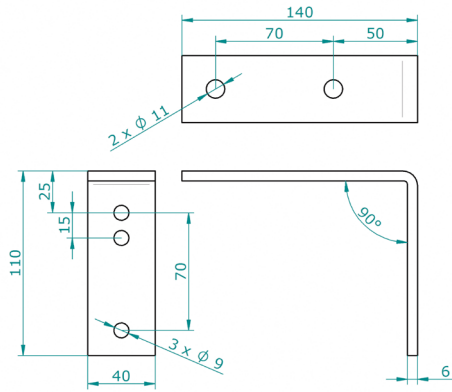
45.33.03.4596 Sonic Classic mounting plate



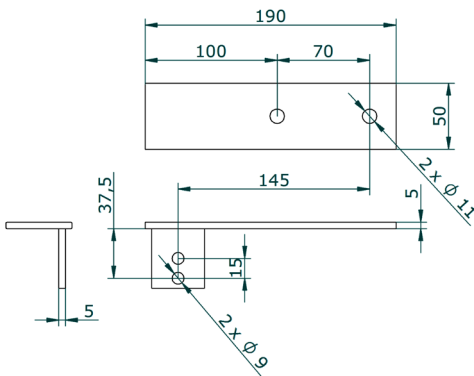
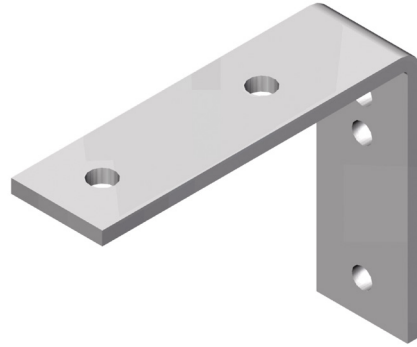
45.35.20.0002 Sonic Classic Z-supports (set of 2)

SONIC CLASSIC WALL SYSTEM

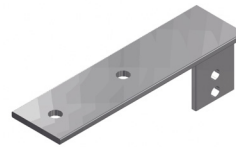
DIMENSIONS ACCESSOIRES



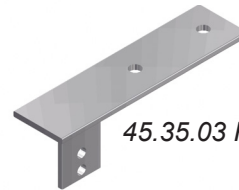
80.10.01 Support for fixing rail or tube



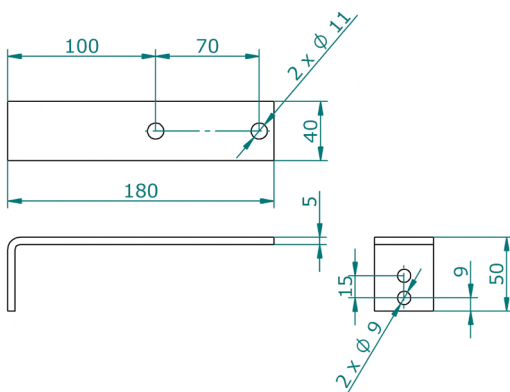
45.35.02 Left version



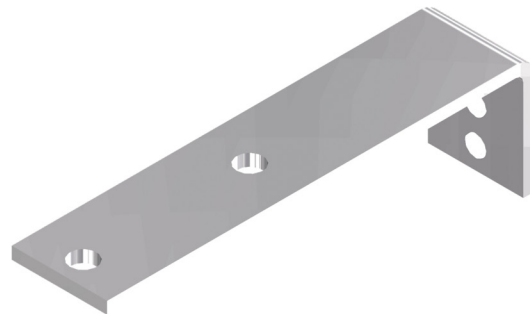
45.35.03 Right version



45.35.02 / 45.35.03 Support special version, for fixing tube or rail to the side of a Sonic wall

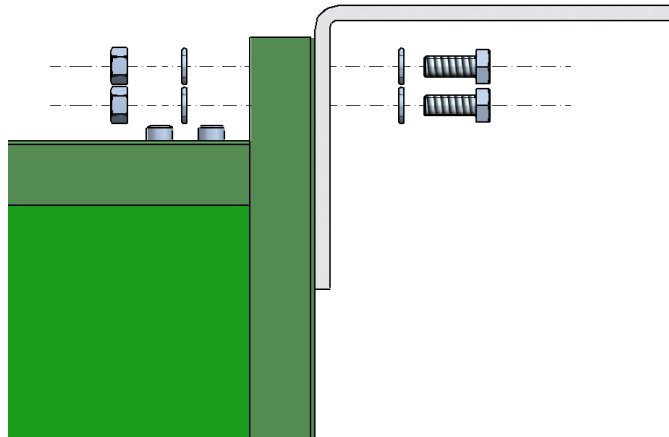


45.35.05 Support extra long

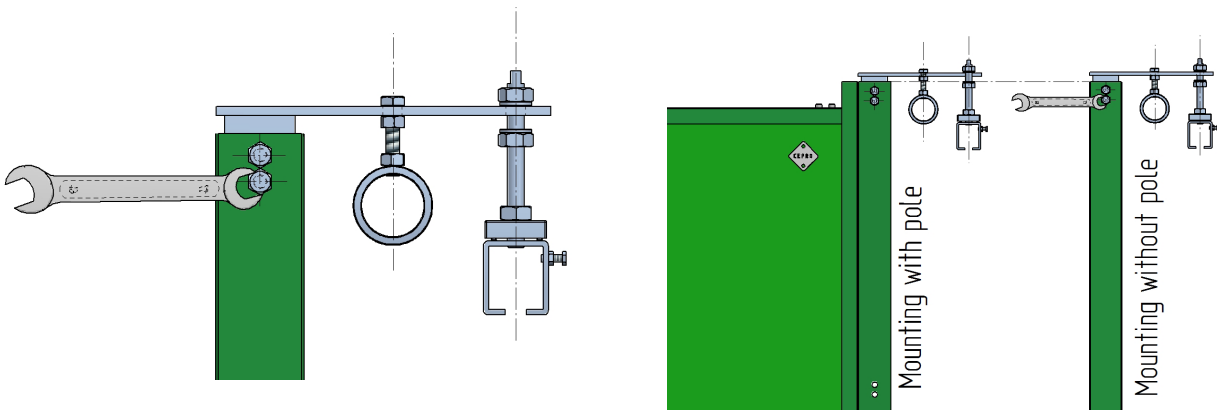


SONIC CLASSIC WALL SYSTEM

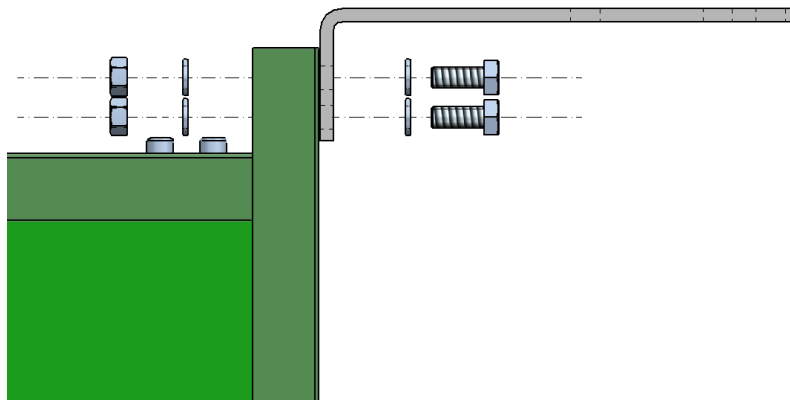
MOUNTING ACCESSOIRES



Mounting support 80.10.01 to Sonic Classic wall element.



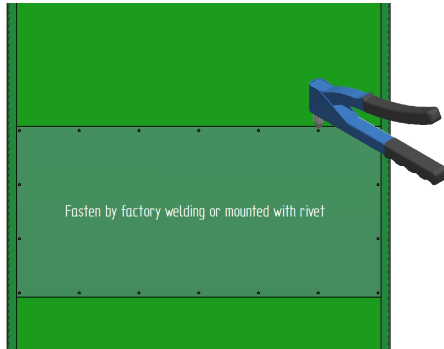
Mounting support 45.35.02 / 45.35.03 to Sonic Classic wall element with rail support 86.10.02 / 86.10.03



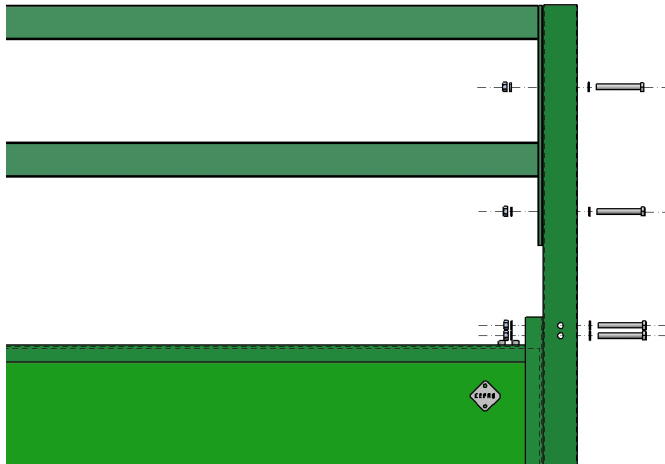
Mounting support 45.35.05 to Sonic Classic wall element.

SONIC CLASSIC WALL SYSTEM

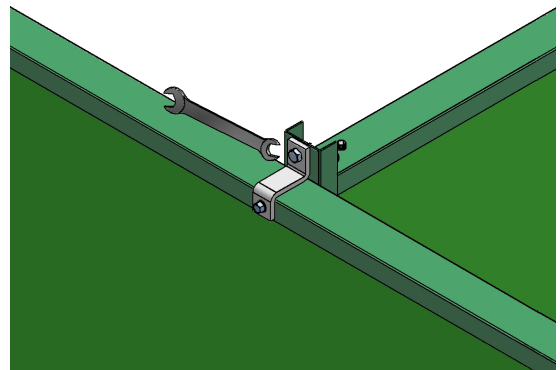
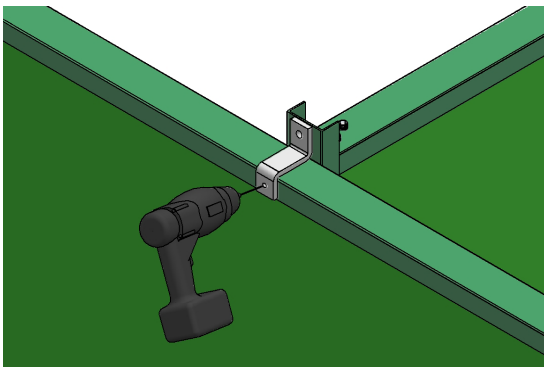
MOUNTING ACCESSOIRES



Mounting plate 45.33.03.4596 to Sonic Classic wall element



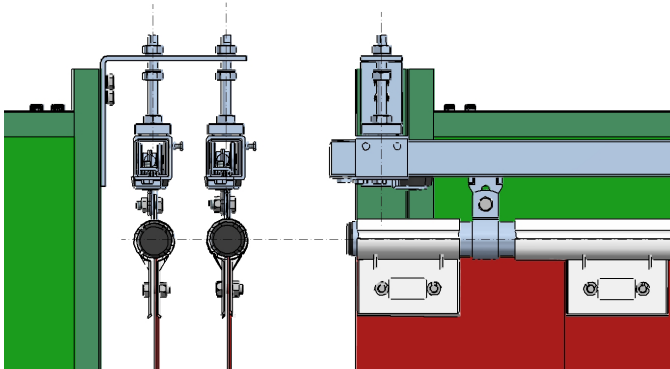
Mounting console 45.30.15.2022 to Sonic Classic wall element



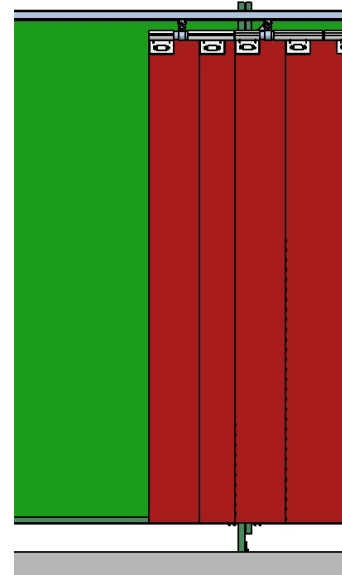
Mounting z-supports 45.35.20.0002 to Sonic Classic wall element

SONIC CLASSIC WALL SYSTEM

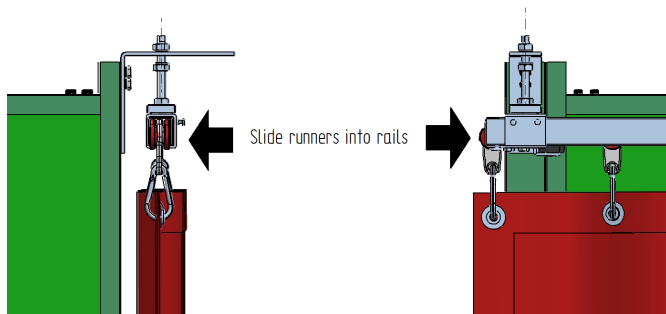
MOUNTING ACCESSOIRES



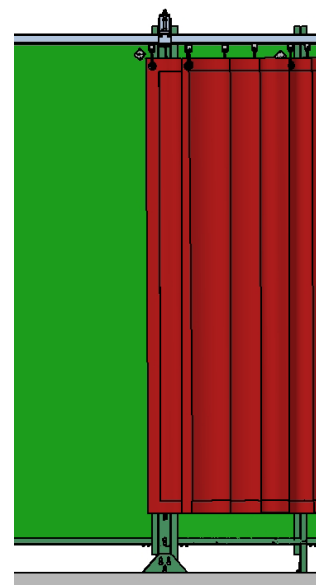
Slidable strip set mounted in a double rail



Height strips to underside Sonic element 192 cm, mounted in a single or double rail.



Slidable curtain mounted in a single rail



Height standard curtain 180 cm, mounted in a single or double rail.