

CABLE REEL

Description

The Cepro cable reel is an automatic cable reel for flexible and temporary workplace shielding. The steel cable can be pulled out and fixed to the opposite wall bracket. Cepro welding or grinding curtains can be suspended from the cable to create temporary protection.

After use, the cable retracts into the reel, leaving the workspace freely accessible again.

Application

For temporary shielding in welding and grinding areas. Suitable for suspending Cepro welding and grinding curtains to protect against welding light, sparks, spatter and grinding dust.

Ideal for workplaces where fixed shielding is not required.

Conditions for use

- Mount the cable reel to a solid wall or steel construction.
- Fix the tensioning device to the opposite wall.
- Always hold the cable when rewinding.
- Maintenance must only be carried out by trained staff.
- Do not open the spring housing box.

Characteristics

The cable reel is made of coated steel with galvanized steel support parts. It is fitted with a stainless steel cable, incorporated in the reel.

The cable has a length of 8 metres and a diameter of 3 mm. The positioning arm can rotate 180° for flexible use.

Available dimensions

Cable reel, 8 m cable, Ø 3 mm, excluding curtain and rings

82.20.10



CABLE REEL

COMPOSITION

Moulded steel parts, epoxy powder coated.
Support frame parts made of galvanized steel.
Stainless steel cable AISI 316.
Contain spring-loaded mechanical parts.
Contain no electrical parts.

USE AND HANDLING

Coating can be damaged by open fire or intensive heat.

Grip the handle at the end of the cable and pull the cable to the desired length. Hook the handgrip-ring to the tensioning device, fixed to the opposite wall. Curtains can then be drawn along the cable to delimit the working area.

After use, always hold the cable when rewinding to avoid damage to the cable reel, equipment, people or surrounding objects.

MAINTENANCE AND SAFETY

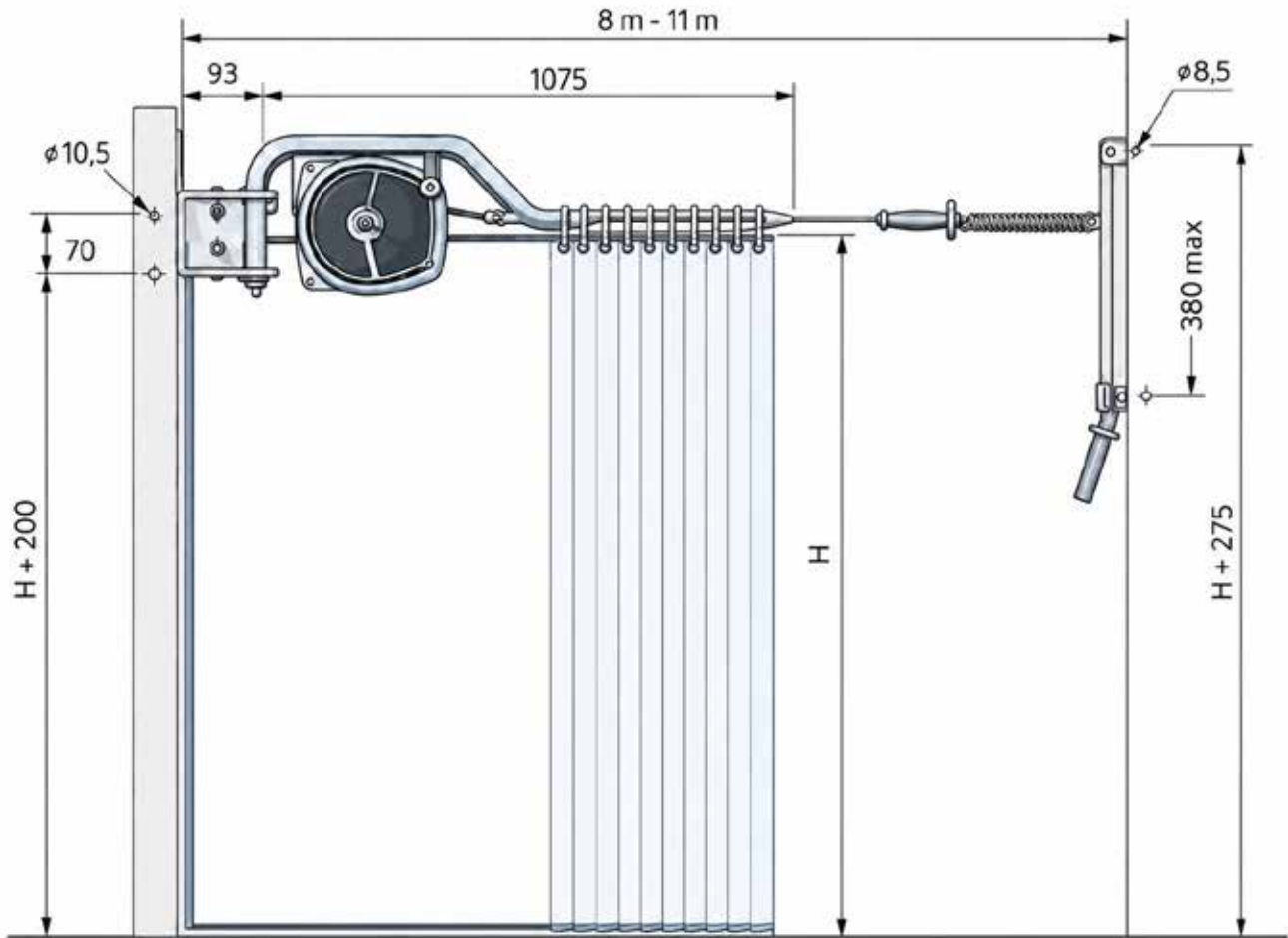
- Cable reel and tensioning device must be fixed to a solid wall or suitable steel construction.
- Before tensioning the cable, mount clamp code 0378 as shown in the mounting instruction.
- In case of breakage of the cable reel, the absence of clamp 0378 voids the warranty.
- Always make sure that there is no tension in the spring before starting work inside the cable reel.
- Maintenance may only be carried out by suitably trained staff.
- Only original spare parts may be used.
- Do not open the spring housing box. The spring may only be repaired or replaced by qualified technicians.

TECHNICAL SPECIFICATION

Specification	Value
Type	automatic curtain cable reel
Code	82.20.10
Total weight	7 kg
Cable	7 x 19 wires
Cable diameter	3 mm
Cable material	Stainless steel AISI 316
Work load	4.69 kN
Cable length	8 m
Working range	8 m - 11 m
Positioning arm	180° rotating
Maximum pulling force	Pmax. 18 daN
Operation	manually
Application	for indoor use

CABLE REEL

DIMENSIONS

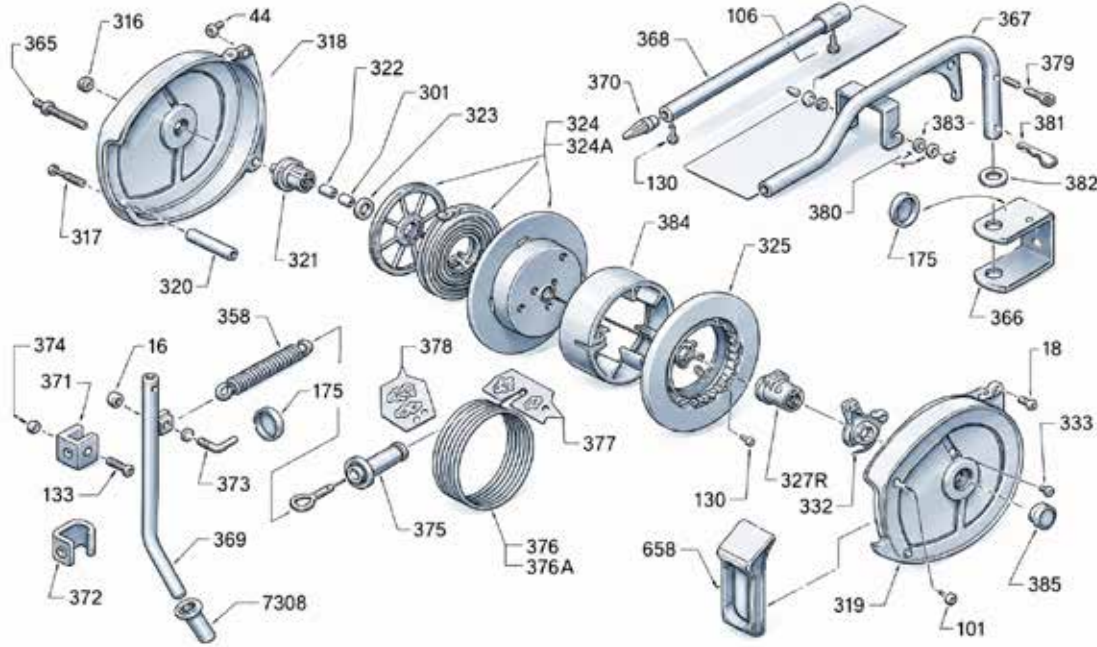


Version 001 - Check our website for the latest version.

CEPRO_PFS_Separation_cable_reel_2EN_rev

CABLE REEL

PART LIST



ENGLISH	FRANCAIS	DEUTSCH	ESPAÑOL
016 Nut M10	Ecrou M10	Mutter M10	Tuerca M10
018 Screw TE M6x10	Vis TE M6x10	Schraube TE M6x10	Tornillo TE M6x10
044 Nut FR M6	Ecrou FR M6	Mutter FR M6	Tuerca FR M6
101 Nut M5	Ecrou M5	Mutter M5	Tuerca M5
106 Screw TCI M5x8	Vis TCI M5x8	Schraube TCI M5x8	Tornillo TCI M5x8
130 Screw TC 5x12 HILO	Vis TC 5x12 HILO	Schraube TC 5x12 HILO	Tornillo TC 5x12 HILO
133 Screw TE M8x45	Vis TE M8x45	Schraube TE M8x45	Tornillo TE M8x45
175 Ring d.35	Bague d.35	Ring d.35	Anillo d.35
301 Bush d.13x16	Boucle d.13x16	Buchse d.13x16	Buje d.13x16
316 Nut M12	Ecrou M12 basso	Mutter M12 basso	Tuerca M12 basso
317 Screw TC M5x67	Vis TC M5x67	Schraube TC M5x67	Tornillo TC M5x67
318 Left half casing	Demi carter coté ressort	Gehäusehalfte feder seite	Semiconcha izquierda
319 Right half casing	Demi carter coté joint tournant	Gehäusehalfte verschraubungsseite	Semiconcha derecha
320 Spacer L=68	Entretoise L=68	Distanzbolzen L=68	Espaciador L=68
321 Spring linkage shaft	Moyeu d'entraînement	Nabe zu feder	Buje ataque muselle
322 Screw TC 6x20 HILO	Vis TC 6x20 HILO	Schraube TC 6x20 HILO	Tornillo TC 6x20 HILO
323 Washer d.6x26x2	Rondelle d.6x26x2	Stutzscheibe d.6x26x2	Aranela d.6x26x2
324 Spring (8 mt)	Ressort (8 mt)	Federpaket (8 mt)	Muelle (8 mt)
324A Spring (11 mt)	Ressort (11 mt)	Federpaket (11 mt)	Muelle (11 mt)
325 Half drum	Demi Tambour	Trommelhalfte Nabe	Semi tambor
327R Shaft	Myeu	Nabe	Buje
332 Support for ratchet hook	Support de cliquet	Support fur sperrklinke	Soporte
333 Screw TC M4x10	Vis TC M4x10	Schraube TC M4x10	Tornillo TC M4x10
358 Spring d.30x204	Ressort d.30x204	Federpaket d.30x204	Muelle d.30x204
365 Tie rod M5x100	Tirant M5x100	Distanzbolzen M5x100	Tirante M5x100
366 Bracket	Support	Halter	Abrazadera
367 Support pipe	Tuyau support	Stützrohr	Soporte de la tubería
368 Extension pipe	Tuyau droit	Gerade schlauch	Tubo de extensión
369 Tensioning device	Dispositif de tension	Spannvorrichtung	Tensor
370 Cable guide	Guide Cable	Kabelführung	Guía de cable
371 Bracket	Support	Halter	Abrazadera
372 Bracket	Support	Halter	Abrazadera
373 Bent screw M10	Vis bent M10	Bent Schraube M10	Tornillo bent M10
374 Nut ATB M8	Ecrou ATB M8	Mutter ATB M8	Tuerca ATB M8
375 Handle for cable	Poignee pour cable	Griff fur kabel	Empuñadura
376 Steel cable d.3 L= 8 m	Cable acier d.3 L= 8 m	Kabel d.3 L= 8 m mit auge	Cable de acero d.3 L= 8 m
376A Steel Cable d.3 L= 11 m	Cable acier d.3 L= 11 m	Kabel d.3 L= 11 m mit auge	Cable de acero d.3 L= 11 m
377 Clamp	Clamp	Klemm	Mordaza
378 Double clamp	Double clamp	Doppelschelle	Mordaza doble
379 Split pin d.4x36	Goupille d.4x36	Split d.4x36	Pasador d.4x36
380 Washer d.5x15	Rondelle d.5x15	Stutzscheibe d.5x15	Aranela d.5x15
381 Elastic split pin d.3	Goupille elastique d.3	Elastic split pin d.3	Pasador d.3
382 Washer d.25x39x4	Rondelle d.25x39x4	Stutzscheibe d.25x39x4	Aranela d.25x39x4
383 Nut M5	Ecrou M5	Mutter M5	Tuerca M5
384 Plastic ring	Bague plastique	Plastikring	Anillo de tambor
385 Cap nylon d.26	Bouchon nylon d.26	Nylon-Kappe d.26	Tapón d.26
658 Hose guide	Guide tuyau	Schlauchführung	Guía de la manguera
7308 Handle for pipe d.25	Poignee pour tube d.25	Griff fur rohr d.25	Empuñadura d.25

CABLE REEL

MOUNTING

INSTALLATION - INSTALLATION - INSTALLATION - INSTALACION



ATTENTION: before tensioning the cable, mount the clamp code 0378 as shown in figure No. 8. In case of breakage of the cable reel, the lack of this clamp voids the warranty.

